

Species Name	Size	Height	Quantity	Planting Method	Notes	No.
<i>Acer campestre</i>	20-25cm	2.5m	Counted	Planted in Mixed Native Hedge		2
<i>Crataegus monogyna</i>	20-25cm	2.5m	Counted	Planted in Mixed Native Hedge		2
<i>Ligustrum vulgare</i>	20-25cm	2.5m	Counted	Planted in Mixed Native Hedge		2
<i>Euonymus europaea</i>	20-25cm	2.5m	Counted	Planted in Mixed Native Hedge		2
<i>Ilex aquifolium</i>	20-25cm	2.5m	Counted	Planted in Mixed Native Hedge		2
<i>Sambucus nigra</i>	20-25cm	2.5m	Counted	Planted in Mixed Native Hedge		2
<i>Prunus spinosa</i>	20-25cm	2.5m	Counted	Planted in Mixed Native Hedge		2
<i>Quercus robur</i>	20-25cm	2.5m	Counted	Planted in Mixed Native Hedge		2
<i>Sorbus torminalis</i>	20-25cm	2.5m	Counted	Planted in Mixed Native Hedge		2
<i>Tilia cordata</i>	20-25cm	2.5m	Counted	Planted in Mixed Native Hedge		2

Species Name	Size	Height	Quantity	Planting Method	Notes	No.
<i>Choisya ternata</i>	20-25cm	2.5m	Counted	Planted in Mixed Native Hedge		2
<i>Ilex crenata 'Golden Gem'</i>	20-25cm	2.5m	Counted	Planted in Mixed Native Hedge		2
<i>Sarcococca hookerana humilis</i>	20-25cm	2.5m	Counted	Planted in Mixed Native Hedge		2
<i>Skimmia japonica 'Veitchii'</i>	20-25cm	2.5m	Counted	Planted in Mixed Native Hedge		2
<i>Ligustrum vulgare</i>	20-25cm	2.5m	Counted	Planted in Mixed Native Hedge		2
<i>Crataegus monogyna</i>	20-25cm	2.5m	Counted	Planted in Mixed Native Hedge		2
<i>Acer campestre</i>	20-25cm	2.5m	Counted	Planted in Mixed Native Hedge		2
<i>Sambucus nigra</i>	20-25cm	2.5m	Counted	Planted in Mixed Native Hedge		2
<i>Prunus spinosa</i>	20-25cm	2.5m	Counted	Planted in Mixed Native Hedge		2
<i>Euonymus europaea</i>	20-25cm	2.5m	Counted	Planted in Mixed Native Hedge		2
<i>Quercus robur</i>	20-25cm	2.5m	Counted	Planted in Mixed Native Hedge		2
<i>Sorbus torminalis</i>	20-25cm	2.5m	Counted	Planted in Mixed Native Hedge		2
<i>Tilia cordata</i>	20-25cm	2.5m	Counted	Planted in Mixed Native Hedge		2

Species Name	Size	Height	Quantity	Planting Method	Notes	No.
<i>Crataegus monogyna</i>	20-25cm	2.5m	Counted	Planted in Mixed Native Hedge		2
<i>Acer campestre</i>	20-25cm	2.5m	Counted	Planted in Mixed Native Hedge		2
<i>Ilex aquifolium</i>	20-25cm	2.5m	Counted	Planted in Mixed Native Hedge		2
<i>Sambucus nigra</i>	20-25cm	2.5m	Counted	Planted in Mixed Native Hedge		2
<i>Prunus spinosa</i>	20-25cm	2.5m	Counted	Planted in Mixed Native Hedge		2
<i>Euonymus europaea</i>	20-25cm	2.5m	Counted	Planted in Mixed Native Hedge		2
<i>Quercus robur</i>	20-25cm	2.5m	Counted	Planted in Mixed Native Hedge		2
<i>Sorbus torminalis</i>	20-25cm	2.5m	Counted	Planted in Mixed Native Hedge		2
<i>Tilia cordata</i>	20-25cm	2.5m	Counted	Planted in Mixed Native Hedge		2

Species Name	Size	Height	Quantity	Planting Method	Notes	No.
<i>Crataegus monogyna</i>	20-25cm	2.5m	Counted	Planted in Mixed Native Hedge		2
<i>Acer campestre</i>	20-25cm	2.5m	Counted	Planted in Mixed Native Hedge		2
<i>Ilex aquifolium</i>	20-25cm	2.5m	Counted	Planted in Mixed Native Hedge		2
<i>Sambucus nigra</i>	20-25cm	2.5m	Counted	Planted in Mixed Native Hedge		2
<i>Prunus spinosa</i>	20-25cm	2.5m	Counted	Planted in Mixed Native Hedge		2
<i>Euonymus europaea</i>	20-25cm	2.5m	Counted	Planted in Mixed Native Hedge		2
<i>Quercus robur</i>	20-25cm	2.5m	Counted	Planted in Mixed Native Hedge		2
<i>Sorbus torminalis</i>	20-25cm	2.5m	Counted	Planted in Mixed Native Hedge		2
<i>Tilia cordata</i>	20-25cm	2.5m	Counted	Planted in Mixed Native Hedge		2

Species Name	Size	Height	Quantity	Planting Method	Notes	No.
<i>Crataegus monogyna</i>	20-25cm	2.5m	Counted	Planted in Mixed Native Hedge		2
<i>Acer campestre</i>	20-25cm	2.5m	Counted	Planted in Mixed Native Hedge		2
<i>Ilex aquifolium</i>	20-25cm	2.5m	Counted	Planted in Mixed Native Hedge		2
<i>Sambucus nigra</i>	20-25cm	2.5m	Counted	Planted in Mixed Native Hedge		2
<i>Prunus spinosa</i>	20-25cm	2.5m	Counted	Planted in Mixed Native Hedge		2
<i>Euonymus europaea</i>	20-25cm	2.5m	Counted	Planted in Mixed Native Hedge		2
<i>Quercus robur</i>	20-25cm	2.5m	Counted	Planted in Mixed Native Hedge		2
<i>Sorbus torminalis</i>	20-25cm	2.5m	Counted	Planted in Mixed Native Hedge		2
<i>Tilia cordata</i>	20-25cm	2.5m	Counted	Planted in Mixed Native Hedge		2

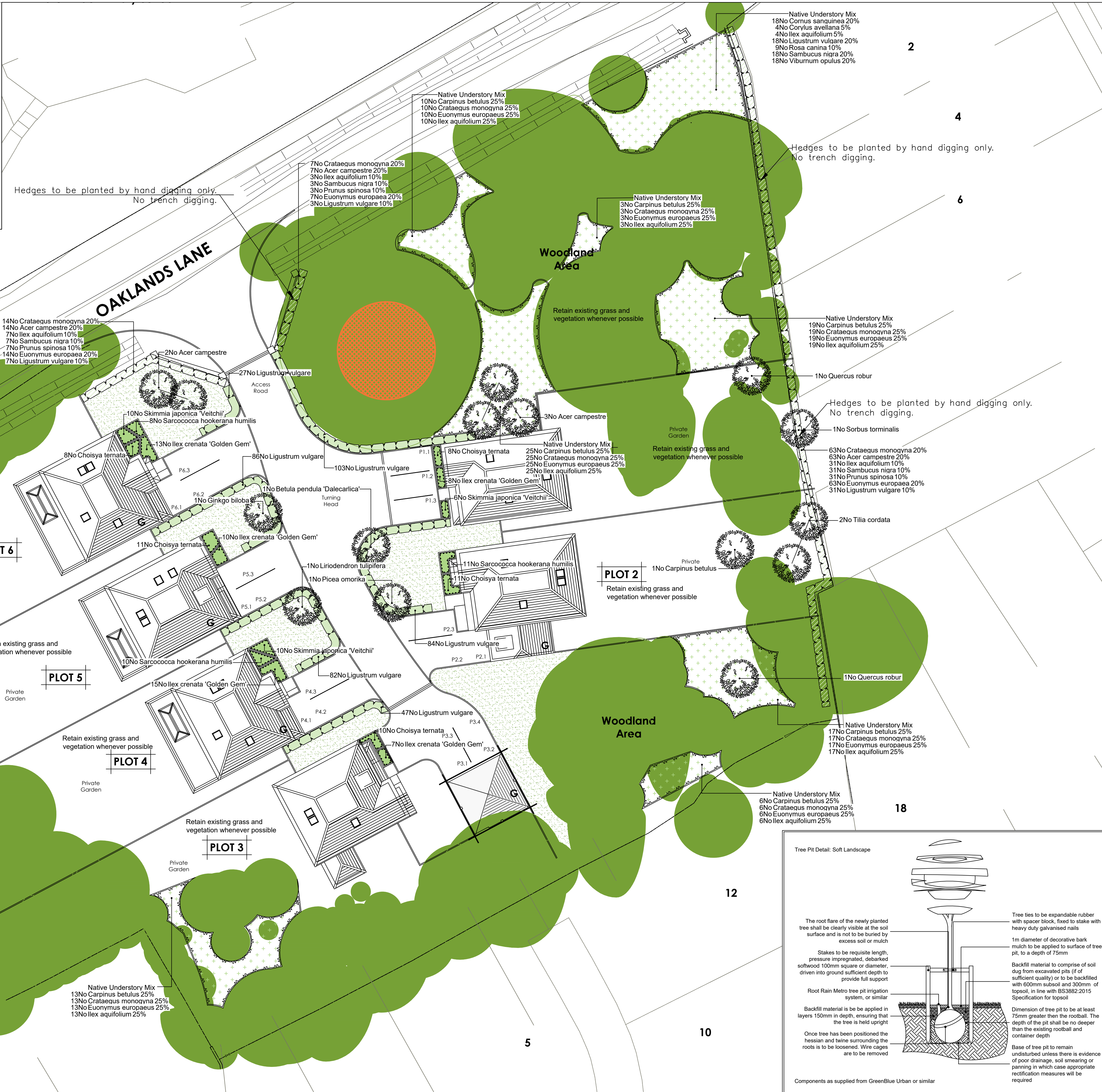
Species Name	Size	Height	Quantity	Planting Method	Notes	No.
<i>Crataegus monogyna</i>	20-25cm	2.5m	Counted	Planted in Mixed Native Hedge		2
<i>Acer campestre</i>	20-25cm	2.5m	Counted	Planted in Mixed Native Hedge		2
<i>Ilex aquifolium</i>	20-25cm	2.5m	Counted	Planted in Mixed Native Hedge		2
<i>Sambucus nigra</i>	20-25cm	2.5m	Counted	Planted in Mixed Native Hedge		2
<i>Prunus spinosa</i>	20-25cm	2.5m	Counted	Planted in Mixed Native Hedge		2
<i>Euonymus europaea</i>	20-25cm	2.5m	Counted	Planted in Mixed Native Hedge		2
<i>Quercus robur</i>	20-25cm	2.5m	Counted	Planted in Mixed Native Hedge		2
<i>Sorbus torminalis</i>	20-25cm	2.5m	Counted	Planted in Mixed Native Hedge		2
<i>Tilia cordata</i>	20-25cm	2.5m	Counted	Planted in Mixed Native Hedge		2

Species Name	Size	Height	Quantity	Planting Method	Notes	No.
<i>Crataegus monogyna</i>	20-25cm	2.5m	Counted	Planted in Mixed Native Hedge		2
<i>Acer campestre</i>	20-25cm	2.5m	Counted	Planted in Mixed Native Hedge		2
<i>Ilex aquifolium</i>	20-25cm	2.5m	Counted	Planted in Mixed Native Hedge		2
<i>Sambucus nigra</i>	20-25cm	2.5m	Counted	Planted in Mixed Native Hedge		2
<i>Prunus spinosa</i>	20-25cm	2.5m	Counted	Planted in Mixed Native Hedge		2
<i>Euonymus europaea</i>	20-25cm	2.5m	Counted	Planted in Mixed Native Hedge		2
<i>Quercus robur</i>	20-25cm	2.5m	Counted	Planted in Mixed Native Hedge		2
<i>Sorbus torminalis</i>	20-25cm	2.5m	Counted	Planted in Mixed Native Hedge		2
<i>Tilia cordata</i>	20-25cm	2.5m	Counted	Planted in Mixed Native Hedge		2

Species Name	Size	Height	Quantity	Planting Method	Notes	No.
<i>Crataegus monogyna</i>	20-25cm	2.5m	Counted	Planted in Mixed Native Hedge		2
<i>Acer campestre</i>	20-25cm	2.5m	Counted	Planted in Mixed Native Hedge		2
<i>Ilex aquifolium</i>	20-25cm	2.5m	Counted	Planted in Mixed Native Hedge		2
<i>Sambucus nigra</i>	20-25cm	2.5m	Counted	Planted in Mixed Native Hedge		2
<i>Prunus spinosa</i>	20-25cm	2.5m	Counted	Planted in Mixed Native Hedge		2
<i>Euonymus europaea</i>	20-25cm	2.5m	Counted	Planted in Mixed Native Hedge		2
<i>Quercus robur</i>	20-25cm	2.5m	Counted	Planted in Mixed Native Hedge		2
<i>Sorbus torminalis</i>	20-25cm	2.5m	Counted	Planted in Mixed Native Hedge		2
<i>Tilia cordata</i>	20-25cm	2.5m	Counted	Planted in Mixed Native Hedge		2

Species Name	Size	Height	Quantity	Planting Method	Notes	No.
<i>Crataegus monogyna</i>	20-25cm	2.5m	Counted	Planted in Mixed Native Hedge		2
<i>Acer campestre</i>	20-25cm	2.5m	Counted	Planted in Mixed Native Hedge		2
<i>Ilex aquifolium</i>	20-25cm	2.5m	Counted	Planted in Mixed Native Hedge		2
<i>Sambucus nigra</i>	20-25cm	2.5m	Counted	Planted in Mixed Native Hedge		2
<i>Prunus spinosa</i>	20-25cm	2.5m	Counted	Planted in Mixed Native Hedge		2
<i>Euonymus europaea</i>	20-25cm	2.5m	Counted	Planted in Mixed Native Hedge		2
<i>Quercus robur</i>	20-25cm	2.5m	Counted	Planted in Mixed Native Hedge		2
<i>Sorbus torminalis</i>	20-25cm	2.5m	Counted	Planted in Mixed Native Hedge		2
<i>Tilia cordata</i>	20-25cm	2.5m	Counted	Planted in Mixed Native Hedge		2

Species Name	Size	Height	Quantity	Planting Method	Notes	No.
<i>Crataegus monogyna</i>	20-25cm	2.5m	Counted	Planted in Mixed Native Hedge		2
<i>Acer campestre</i>	20-25cm	2.5m	Counted	Planted in Mixed Native Hedge		2
<i>Ilex aquifolium</i>	20-25cm	2.5m	Counted	Planted in Mixed Native Hedge		2
<i>Sambucus nigra</i>	20-25cm	2.5m	Counted	Planted in Mixed Native Hedge		2
<i>Prunus spinosa</i>	20-25cm	2.5m	Counted	Planted in Mixed Native Hedge		2
<i>Euonymus europaea</i>	20-25cm	2.5m	Counted	Planted in Mixed Native Hedge		2
<i>Quercus robur</i>	20-25cm	2.5m	Counted	Planted in Mixed Native Hedge		2
<i>Sorbus torminalis</i>	20-25cm	2.5m	Counted	Planted in Mixed Native Hedge		2
<i>Tilia cordata</i>	20-25cm	2.5m	Counted	Planted in Mixed Native Hedge		2



**SPECIFICATION**  
All works generally, to comply with the written Soft Landscape Specification.  
In case of quantity discrepancies, the quantities on the plan(s) take precedent over the quantities shown in the planting schedule.

**NOTES:**  
DO NOT SCALE FROM DRAWING  
NOT FOR CONSTRUCTION, FOR PLANNING PURPOSES ONLY

- Legend**
- Existing trees to be retained and protected during construction
  - Proposed tree planting within soft landscape. See detail
  - Proposed decorative hedge planting to be planted in a double staggered row 300mm apart and at 500mm centres in each row. To be maintained at 1m height
  - Proposed mixed native hedge planting to be planted in a double staggered row 300mm apart and at 450mm centres in each row. To be maintained at 1m height and 1.8m height adjacent to site boundaries
  - Proposed native understorey mix planting to be planted in groups of 5-7no. of each species and as above
  - Proposed shrub planting to receive 75mm bark mulch after planting operations
  - Proposed grass areas to receive good quality amenity grass turves laid in line with good horticultural practices
  - Proposed area to be added a layer of 750mm thick mulch

Rev	Date	Details	Drawn
A	04.05.23	Add boundary tree planting	JS
Rev			Drawn

**ACD ENVIRONMENTAL**

HEAD OFFICE  
Rodbourne Rail Business Centre, Orange Lane,  
Malmesbury, SN16 0ES  
Tel: 01666 825646

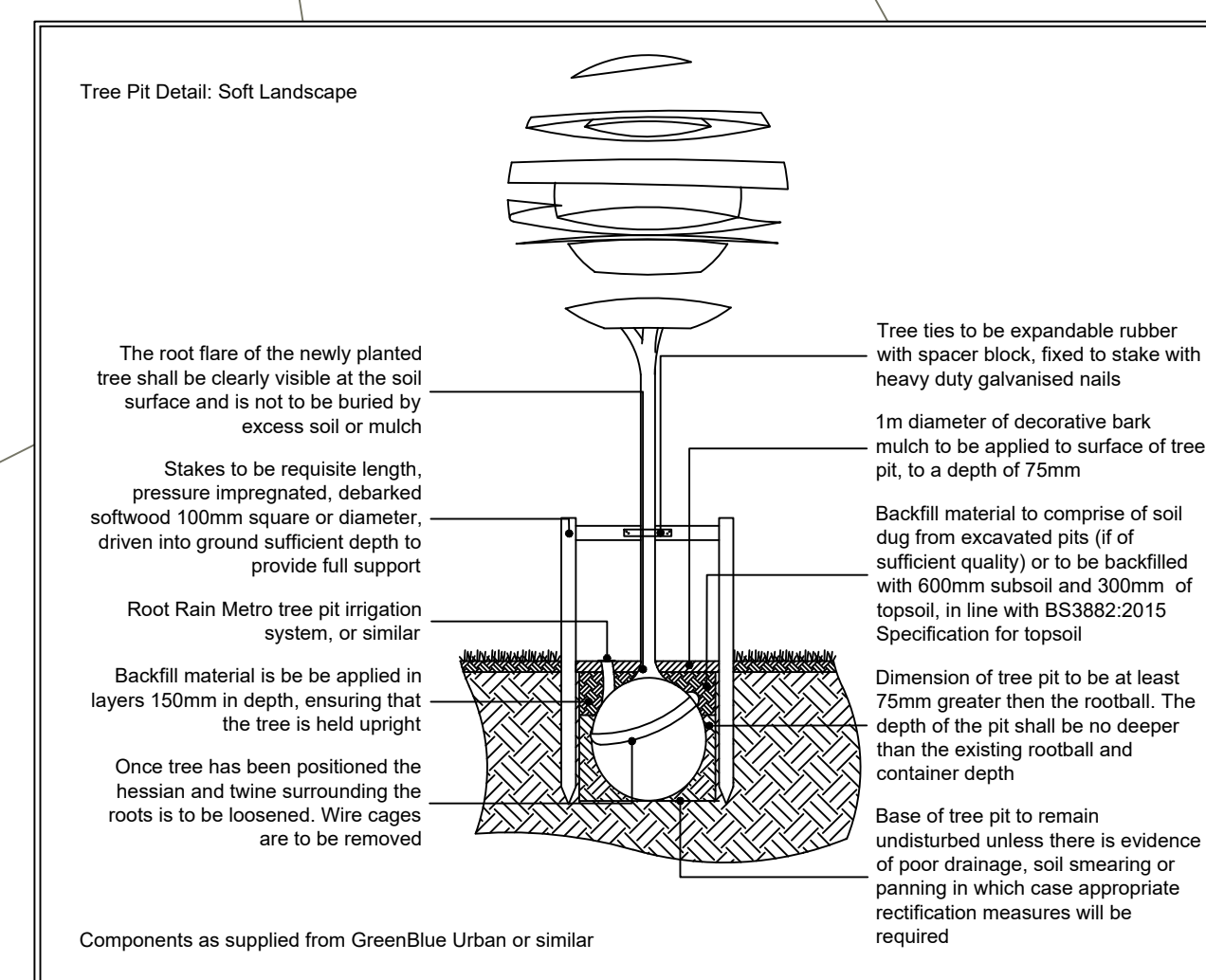
4 & 5 The Old Mill, Fry's Yard, Bridge Street,  
Godalming, GU7 1HP  
Tel: 01483 425714

Suite 6, Crescent House, Yonge Close,  
Eastleigh, SO50 9SX  
Tel: 02382 026300

email: mail@acdenv.co.uk  
www.acdenvironmental.co.uk

scheme: Oak Apples,  
Oaklands Lane,  
Crowthorne  
client: Palatine Homes  
drawing: Landscape Proposals  
date: December 2022  
scale: 1:200@A1  
drawing no: PRI24098-11A  
drawn: TC checked: JC

Copyright of ACD Environmental Ltd. All rights described in Chapter IV of the Copyright, Designs and Patents Act 1988 have been generally asserted. 2011. Copyright of this plan remains with ACD until all fees have been paid in full.





This page is intentionally left blank